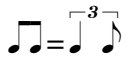


You've Got A Friend In Me

Medium Swing ♩ = 108

Michael Buble



All Play

I

C C#° G/D B/D# Em7 A9 D7(sus4) G6 Em7 A7 D7(sus4)



7 G6 D7 **A** G D7(sus4) G G7 C C#° G C Bm



13 B/D# Em7 C Bm B/D# Em7 C C#° G/D D#° Em7 A9 D7



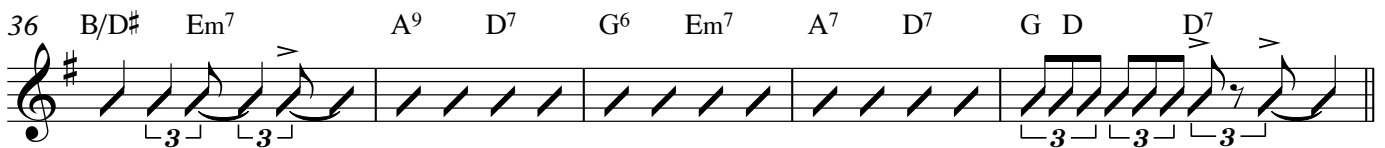
19 G6 Em7 A7 D7 1. G D7(sus4) 2. G Am7 Bb° G/B **B** Cmaj7



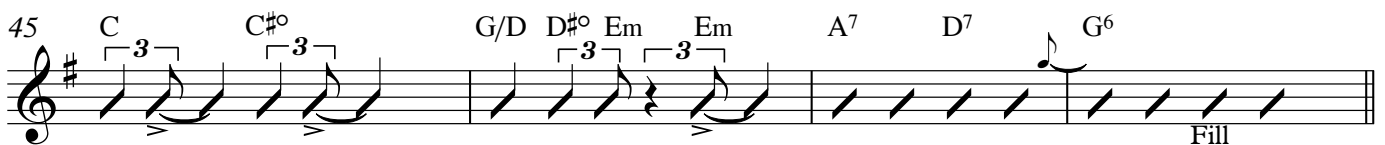
24 F#7 G F#7 G F#7 G#m A° F#/A# Bm7 E7



30 Am D7 **A1** G D7(sus4) G G7 C C#° G C Bm



I1



B1

49 Cmaj7 F#7 G F#7 G F#7 G#m A° F#/A#

Only Piano (Freely)

55 Bm7 E7 Am D7(b9) **A2** G D7(sus4) G Dm7 G7 C C#° G/D G11 C C#°

All Play

62 G/D D#° E7 A9 D7 G6 Em7 A9 D7

66 G6 Em7 A7 D11 G6